

1 BHK

01 • 461 sf

# 1 BHK

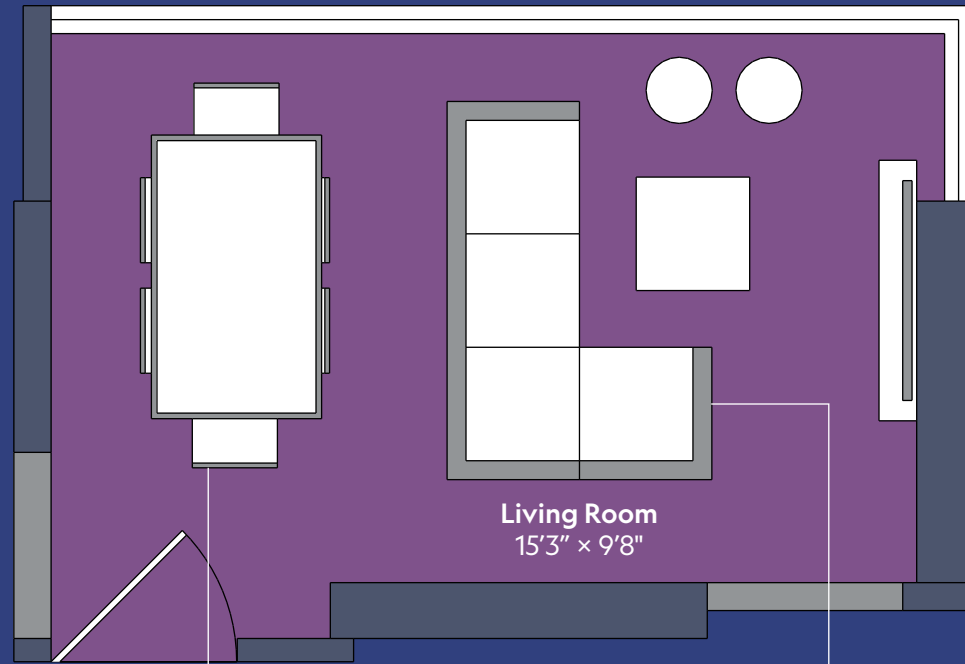
Carpet Area: 461 sf



## LIVING ROOM

# Beyond spectacular Wide Living Room

A 15 foot edge to edge window. And that too with an L-shape which adds 3 more feet and opens up the views in a different direction. Custom designed window sections that allow for huge panes of glass with very minimal framing. A truly phenomenal experience given the unbelievable garden views outside!



Comfortably fits a 6 seater dining table. Even the dining space will have glorious views and great ventilation.

Typical living rooms have dining rooms tucked away deep into some corner, with minimal light and ventilation, forget views.

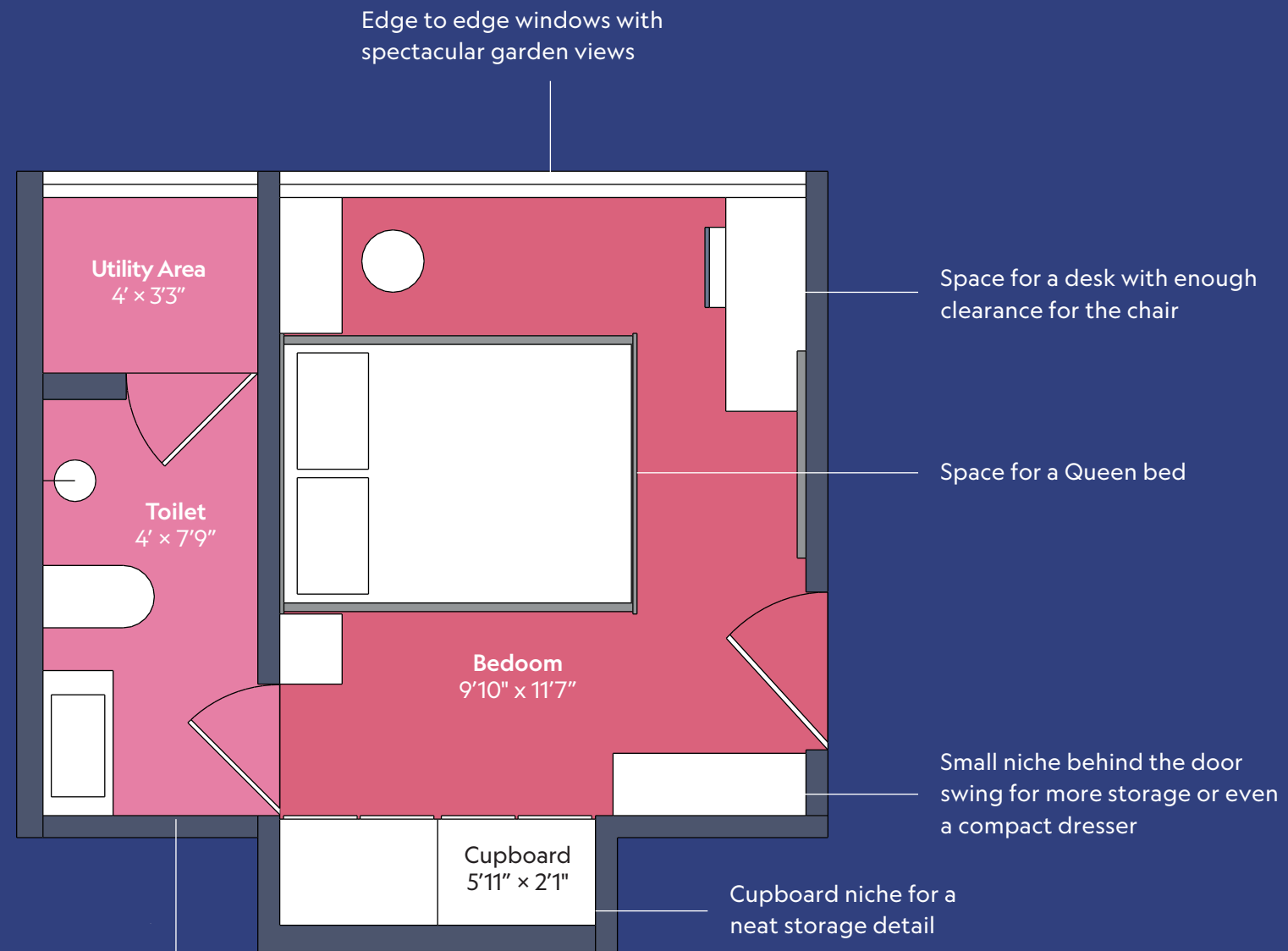
Enough space for an L shaped sofa, a coffee table and some stools / bench.





BEDROOM with attached washroom

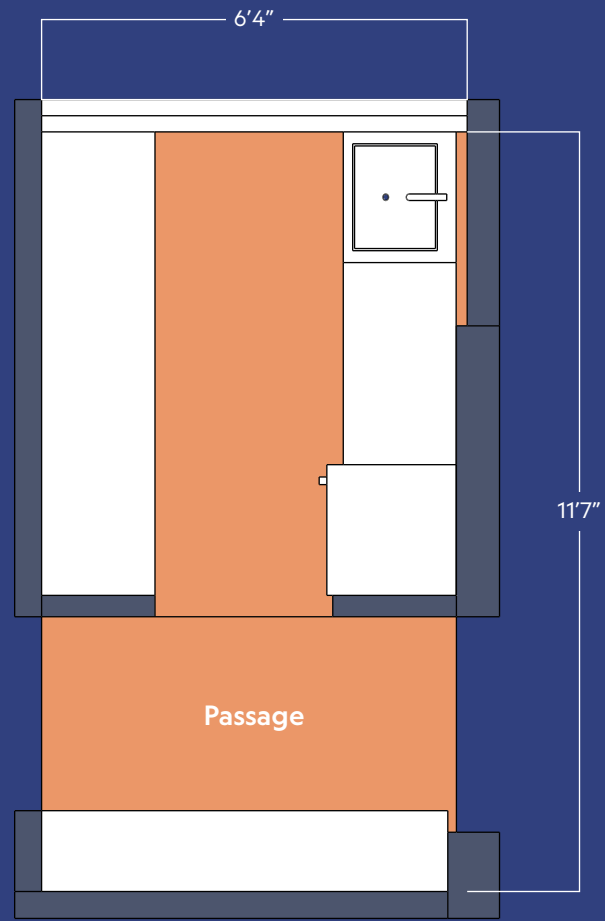
# Every dimension deeply thought through



Spacious attached washroom with a utility area



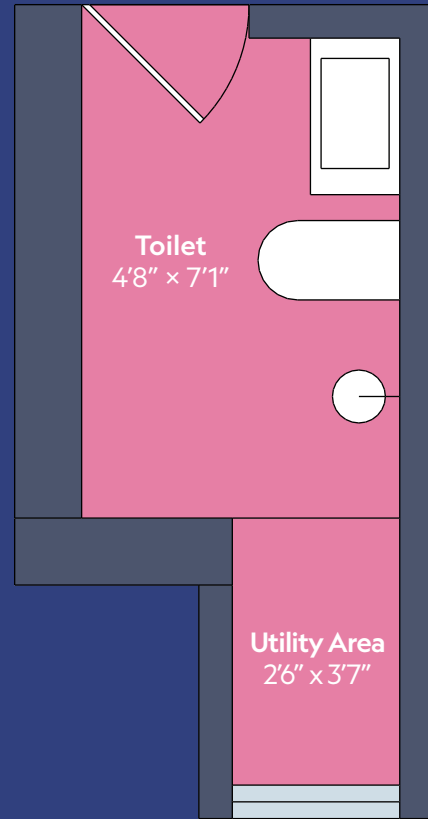
# Kitchen



A highly functional kitchen with glorious views outside! And we came up with a really cool trick to give you lots of additional counter space - we created a niche across the passage and will install another 6 feet long counter there!



# Common Washroom and Utility Areas



Washrooms are important spaces and the user should feel comfortable when they are using these spaces. Our Plug & Play improvements mean that you will be able to use the fully functional space as soon as you move in.

In combination with the other Utility Area in the Bedroom, these utility areas can accommodate a washing machine, AC ODU and even have some space left for drying clothes.



# An innovative main door

Design thinking led us to create innovations even in your main door that can genuinely have a big impact on your day to day experience inside your home.

A small shutter in your main door that you can open up to create **cross ventilation** in your living room. You can also exchange small items through it.



## RERA Number: P51800047418

### Disclaimer:

All published material is **indicative** and may / may not form part of the final project. The Developer reserves rights to make alterations without any prior notice and holds no responsibility for accuracy. This brochure is not a legal document and does not constitute any offer and/ or contract of any nature.

**Actual View:** The views shown in the images are as available at the time of printing this material. Any changes in the views are beyond the control of the developer, who is not liable for the same.

**Architectural Renderings:** Images marked as as "Architectural Renderings" are only indicative. The Developer reserves rights to make additions, deletions, alterations or amendments as and when it deems fit and proper without any prior notice.

All **dimensions** mentioned in the drawings may vary / differ due to construction contingencies, site conditions and approvals from local authorities. Developer reserves the right to make alterations without any prior notice.

Developer is not liable to provide **furniture items**, electronic goods and any other accessories shown in the images.

**Maps** are only indicative and may not be to scale. The Developer holds no responsibility for the accuracy of the same.

**All specifications and amenities** are only indicative may / may not form part of the final project and the Developer reserves rights to make alterations without any prior notice.

The relationship between the Developer and the actual customers will be governed strictly by the agreement and not on the terms of this brochure / advertisement or other promotional document.





[sunset.in](https://www.sunset.in) • 76 71 900 900