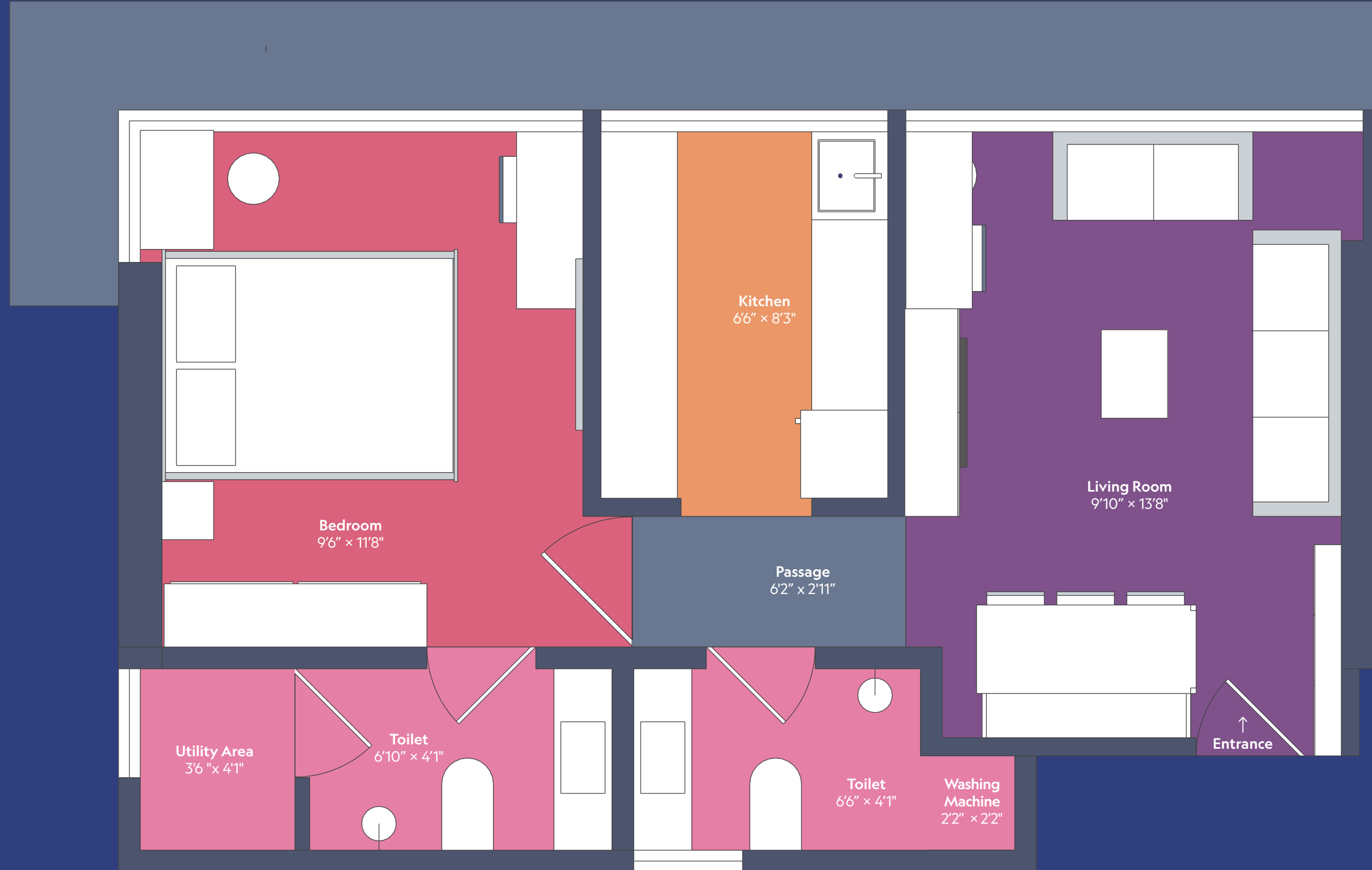


1 BHK

02 • 420 sf

1 BHK

Carpet Area: 420 sf



LIVING ROOM

A revolution in efficiency

If you look at just the dimensions, this living room may appear compact. But in terms of functionality, it actually does much, much more than bigger living rooms you will find on the market! For instance, it has a lot of storage and even a study table, which you won't even find in our other configurations in the same building!

Edge to edge windows for great views and natural light

Plenty of storage and a dedicated desk as well

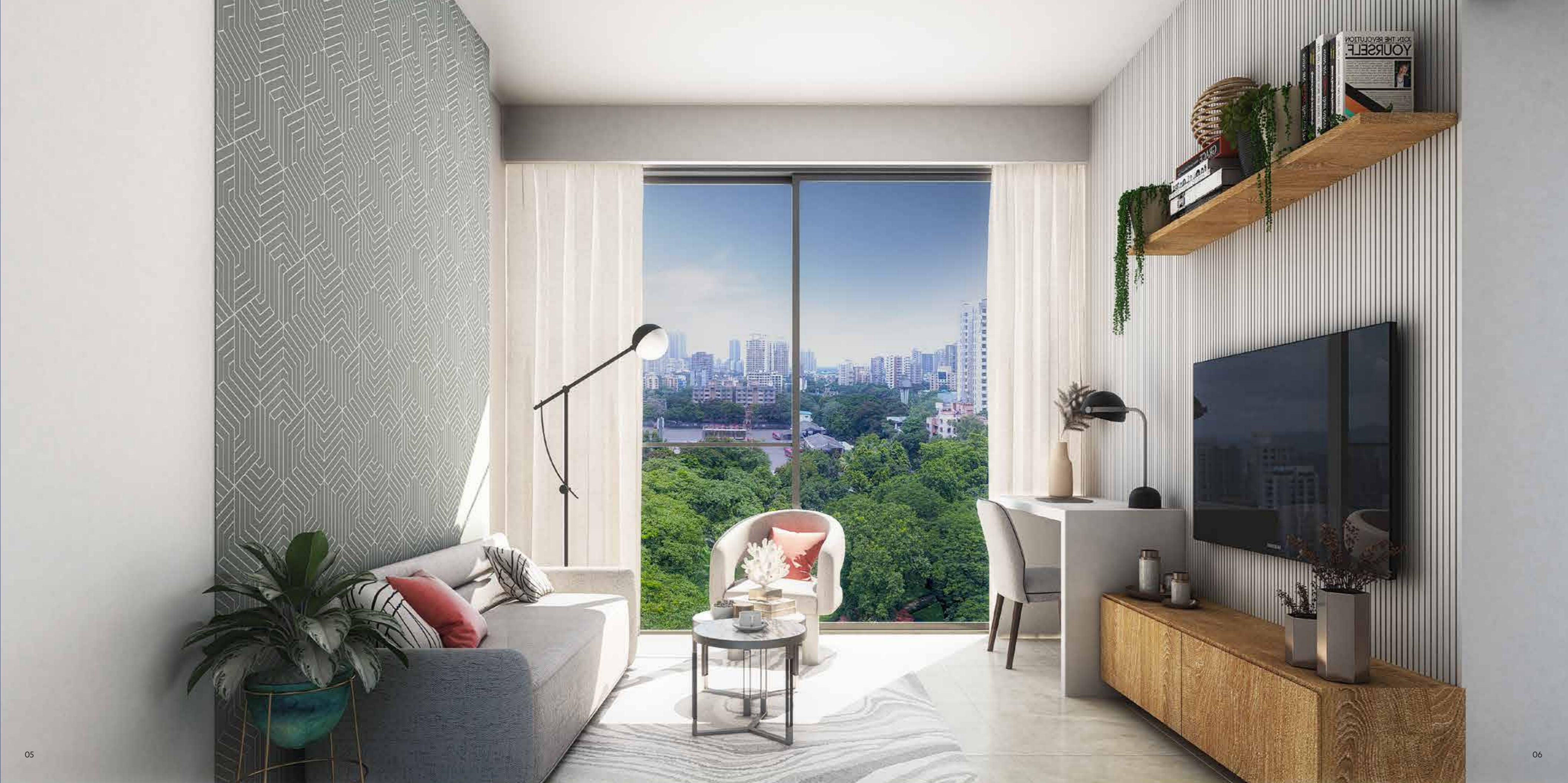


Enough space for 2 sofas and a coffee table. The bigger sofa can comfortably become a sofa-bed as well.

Space for a shoe rack behind the door swing

Comfortably fits a 6 seater dining table





BEDROOM with attached washroom

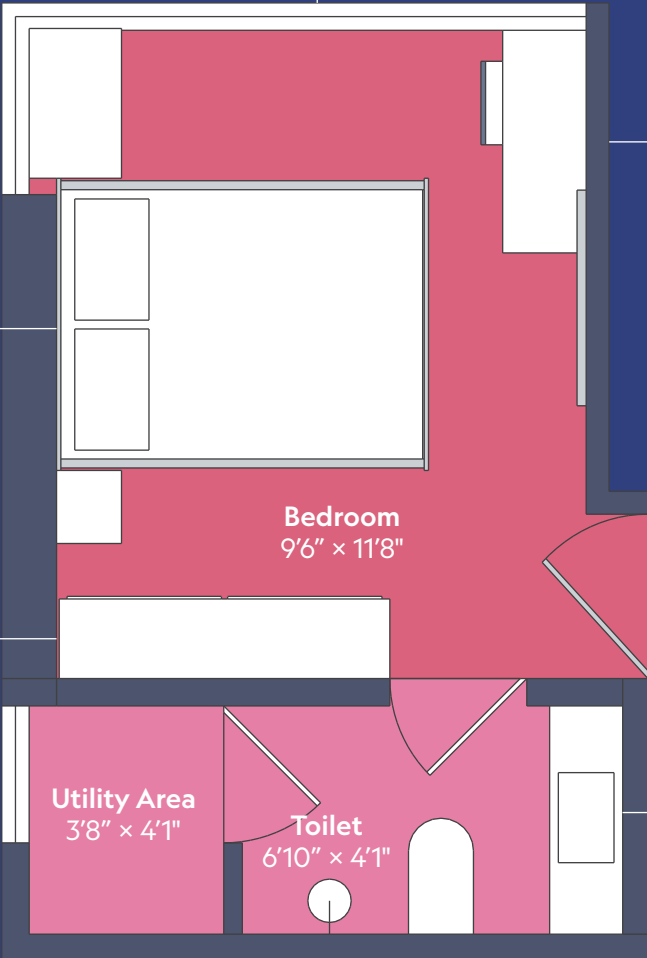
Every dimension deeply thought through

Edge to edge window in an L shape for the most breathtaking views from your bedroom.

Space for a desk with enough clearances

Space for a Queen bed

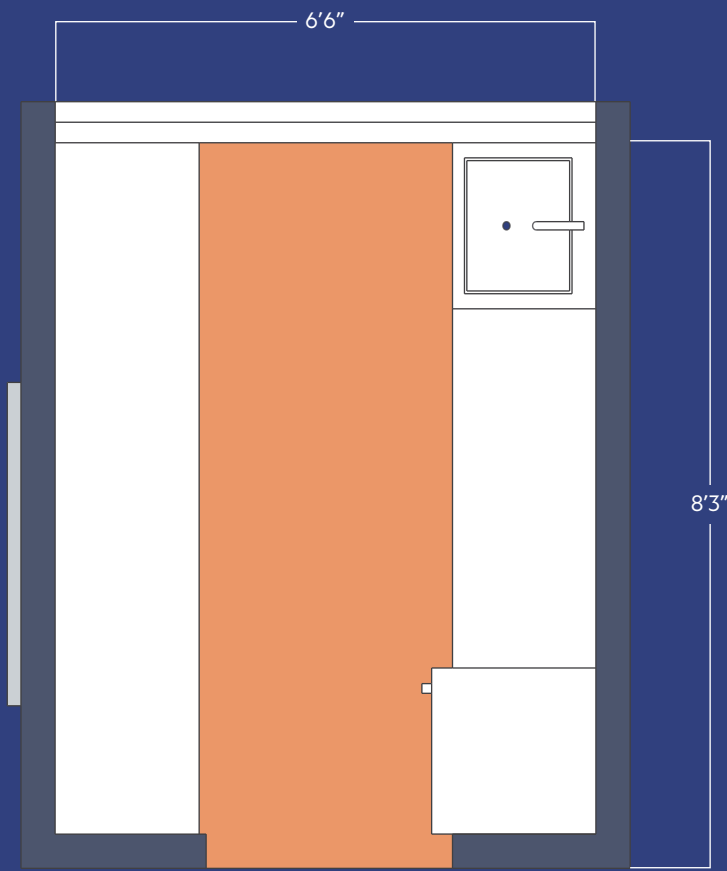
Space for a big cupboard



Spacious attached washroom with a utility area. This washroom has a wide counter which adds a lot of functionality and gives your washroom a 5-star feeling.



Kitchen

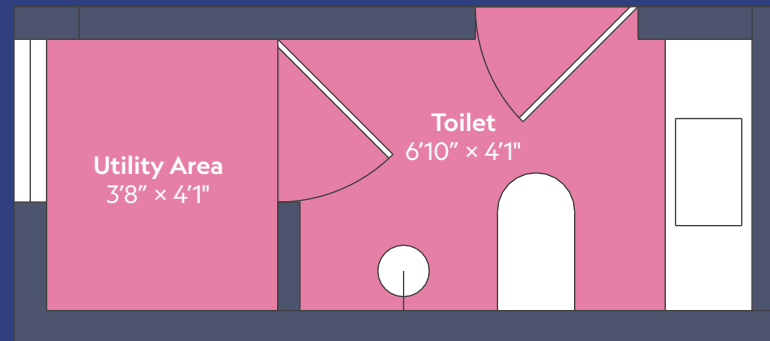


Spacious kitchen with enough counter space for all your appliances.

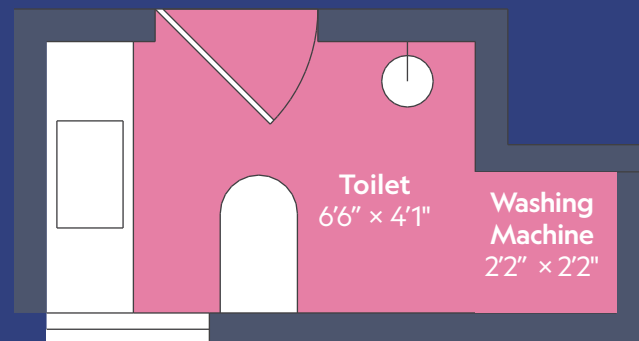


Common Washroom and Utility Areas

Washrooms are important spaces and the user should feel comfortable when they are using these spaces. This washroom has a wide counter which adds a lot of functionality and makes the space feel luxurious. Our Plug & Play improvements mean that you will be able to use the fully functional space as soon as you move in.



The Utility Area in the master bedroom can accommodate AC ODUs and still have some space left for drying clothes.




We have created a dedicated niche in this common washroom for the Washing Machine.




An innovative main door

Design thinking led us to create innovations even in your main door that can genuinely have a big impact on your day to day experience inside your home.



A small shutter in your main door that you can open up to create **cross ventilation** in your family room. You can also exchange small items through it.



A second set of hinges helps you make use of the space behind the main door - the perfect space for a **shoe rack**. Every square foot counts!

RERA Number: P51800047418

Disclaimer:

All published material is **indicative** and may / may not form part of the final project. The Developer reserves rights to make alterations without any prior notice and holds no responsibility for accuracy. This brochure is not a legal document and does not constitute any offer and/ or contract of any nature.

Actual View: The views shown in the images are as available at the time of printing this material. Any changes in the views are beyond the control of the developer, who is not liable for the same.

Architectural Renderings: Images marked as as "Architectural Renderings" are only indicative. The Developer reserves rights to make additions, deletions, alterations or amendments as and when it deems fit and proper without any prior notice.

All **dimensions** mentioned in the drawings may vary / differ due to construction contingencies, site conditions and approvals from local authorities. Developer reserves the right to make alterations without any prior notice.

Developer is not liable to provide **furniture items**, electronic goods and any other accessories shown in the images.

Maps are only indicative and may not be to scale. The Developer holds no responsibility for the accuracy of the same.

All specifications and amenities are only indicative may / may not form part of the final project and the Developer reserves rights to make alterations without any prior notice.

The relationship between the Developer and the actual customers will be governed strictly by the agreement and not on the terms of this brochure / advertisement or other promotional document.



[sunset.in](https://www.sunset.in) • 76 71 900 900