

FamHome

04 • 240 sf

THE ELEMENTS OF
A Family Home



Carpet Area: 240 sf



Family Room



Washroom



Utility Area

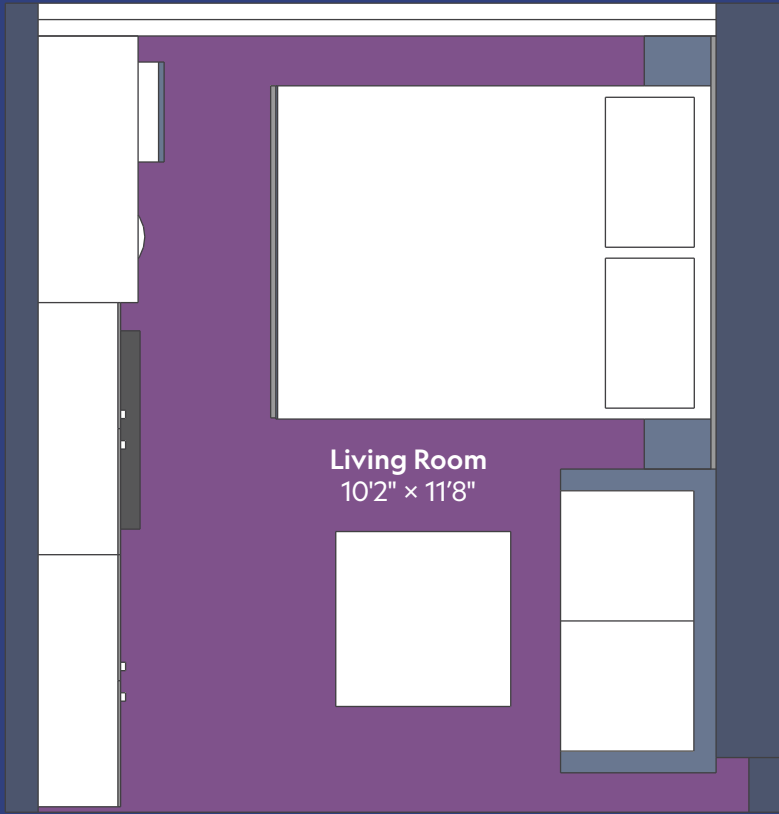


Kitchen

FAMILY ROOM

Everything is possible

The family space delivers way beyond what you would have imagined! You can comfortably have a queen bed, a study table, cupboards for 3-4 people, an additional sofa bed for kids, a smartly planned shoe rack, and even additional niche storage.





FAMILY ROOM

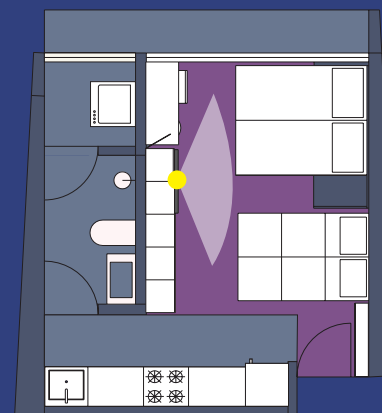
A home with superpowers

We have come up with some simple innovations in the furniture to help you use the same family room in many different ways!



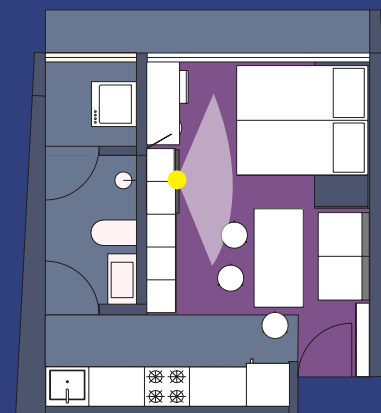
Regular Mode

Delivers almost everything that you could expect from most 1 BHK apartments.



Sleeping Mode

A perfectly comfortable, restful arrangement for 4 people to sleep.



Dining Mode

Creates a dining space for 6-8 people! The coffee table turns into a dining table and a few stackable stools help complete the seating arrangement.



Party Mode

Can accommodate upto 12 guests! That's beyond what most 1BHKs can do. The sofa bed transforms into an L-shaped-couch and additional stackable stools help create additional seating.

FAMILY ROOM

Add partitions for privacy

We have designed some intelligent partitioning system that can convert your family space into multiple rooms, whenever you feel the need.

By using sliding glass partitions, you can quickly enclose the kitchen or split your family space into a bedroom + living room in a few seconds!



Closed Kitchen

If you'd like your kitchen to be a separate space, that's easily possible in our plan. When heavy-duty cooking is happening in the kitchen, for a few hours of the day you can simply close the partition to keep the kitchen noises and smells away. And for the rest of the day you can keep the kitchen open to enjoy great views and natural light - the choice is yours!



Private Bedroom

You could also create separate rooms for the adults and the children by opting for a partition as shown. So you get the privacy of your own bedroom at night, but the same space quickly opens up into a large room during the day!

An innovative main door

Design thinking led us to create innovations even in your main door that can genuinely have a big impact on your day to day experience inside your home.



A small shutter in your main door that you can open up to create **cross ventilation** in your family room. You can also exchange small items through it.



A second set of hinges helps you make use of the space behind the main door - the perfect space for a **shoe rack**. Every square foot counts!



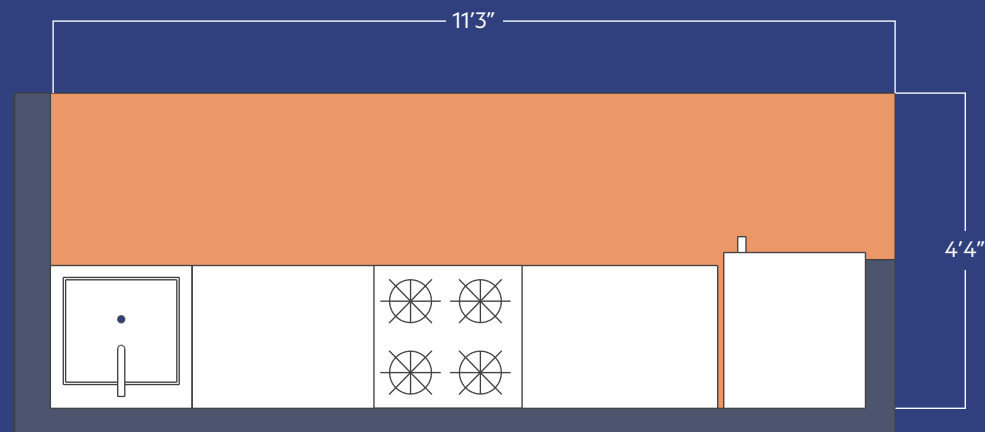
Magic Table

This table is integrated into the storage, but can be pulled out to create more **counter space** for the kitchen and can also be used as a **breakfast table** for quick meals!

KITCHEN

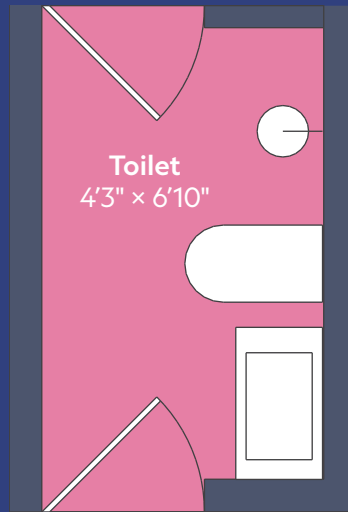
The most used space gets the respect it deserves

Most small homes have a highly compromised kitchen, but our family home has a full-fledged kitchen in every single aspect. Ample space for a full sized fridge, stove and sink. And after all that a solid 5.5' of clear platform to work on. Works beautifully with even 2 people working together!



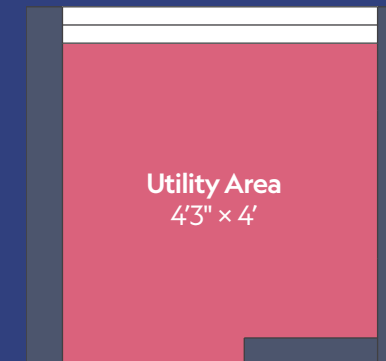
WASHROOM World class finishes

Washrooms are important spaces and the user should feel comfortable when they are using these spaces. Our Plug & Play improvements mean that you will be able to use the fully functional space as soon as you move in.



UTILITY AREA Every little detail, properly planned

The Utility Area can accommodate a Washing Machine, AC ODU and still have some space left for drying clothes.



RERA Number: P51800047418

Disclaimer:

All published material is **indicative** and may / may not form part of the final project. The Developer reserves rights to make alterations without any prior notice and holds no responsibility for accuracy. This brochure is not a legal document and does not constitute any offer and/ or contract of any nature.

Actual View: The views shown in the images are as available at the time of printing this material. Any changes in the views are beyond the control of the developer, who is not liable for the same.

Architectural Renderings: Images marked as as "Architectural Renderings" are only indicative. The Developer reserves rights to make additions, deletions, alterations or amendments as and when it deems fit and proper without any prior notice.

All **dimensions** mentioned in the drawings may vary / differ due to construction contingencies, site conditions and approvals from local authorities. Developer reserves the right to make alterations without any prior notice.

Developer is not liable to provide **furniture items**, electronic goods and any other accessories shown in the images.

Maps are only indicative and may not be to scale. The Developer holds no responsibility for the accuracy of the same.

All specifications and amenities are only indicative may / may not form part of the final project and the Developer reserves rights to make alterations without any prior notice.

The relationship between the Developer and the actual customers will be governed strictly by the agreement and not on the terms of this brochure / advertisement or other promotional document.



[sunset.in](https://www.sunset.in) • 76 71 900 900